



Brief introduction:

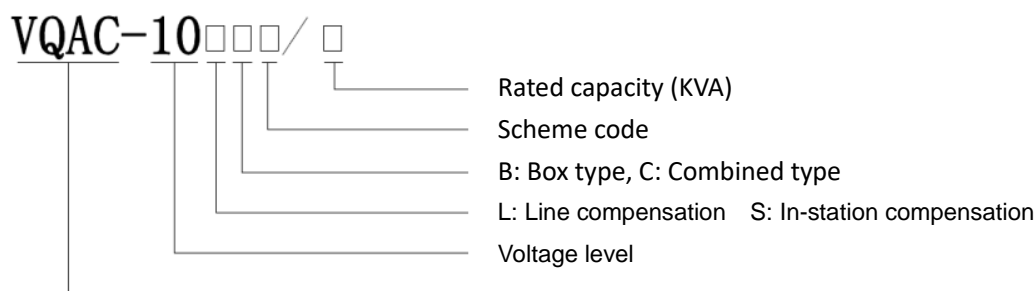
The basic principle of reactive power compensation is to parallel capacitive power load device with inductive power load in the same circuit, so that the energy can interchange between the two loads. Thus the reactive power required by inductive load could be compensated by the reactive power output by capacitive load. Using the parallel capacitors as reactive power compensation device enables it to have the characteristics of low cost, easy installation, short construction period, simple operation & maintenance, low self loss, and quick effect, the current market applications of which are most comprehensive.

The VQAC-10 type medium voltage automatic reactive power compensation unit, which is also known as medium voltage capacitors automatic device, is a new generation of reactive power compensation unit developed by Beijing Hyliton Power Technology Co., Ltd. independently on the basis of its years of experience in on-site service and summarizing of customer demands. It is suitable for the reactive power compensation of 10kv distribution lines in power system, substation busbars and power distribution room busbars of large and medium enterprises. It is widely used in the industries of power, oil field, metallurgy, casting, welding, mining, etc.

Functions:

- Improve voltage quality
- Lower energy consumption
- Increase operating efficiency of power equipment
- Reduce electric costs for users

Type designation:



Application environment (outdoor)

Technical data:

Rated voltage		12 KV
1 min power frequency withstand voltage		42 KV
Rated lightning impulse withstand voltage		75 KV
Rated frequency		50 Hz
Rated capacity		50-4000 KVar, differential 50
Protection grade		IP4X
Lifetime of vacuum contactor		300,000 times
Environmental temperature	Max:	+45℃
	Average for 24h:	+40℃
	Min:	-30℃
Installation altitude		≤3000 m

Product type



VQAC-10LC Line combined type

Components:

Capacitor fling-cut switches
 Power voltage transformers
 Protection current transformers
 Reactors

Internal

Parallel capacitors

External

Sampling instrument transformers

Clip installation at overhead lines

Structural characteristics: Capacitors with good thermal dissipation, convenient for capacity expansion



VQAC-10LB Line box type

Components:

Capacitor fling-cut switches	}	Internal
Power voltage transformers		
Protection current transformers		
Reactors		
Parallel capacitors		
Sampling instrument transformers		Clip installation at overhead lines

Structural characteristics: Easy installation, filth proof



VQAC-10SC In-station combined type

Components:

Capacitor fling-cut switches	}	Internal
Power voltage transformers		
Protection current transformers		
Reactors		
Parallel capacitors		
Sampling instrument transformers		

Structural characteristics: Capacitors with good thermal dissipation, convenient for capacity expansion



VQAC-10SB In-station box type

Components:

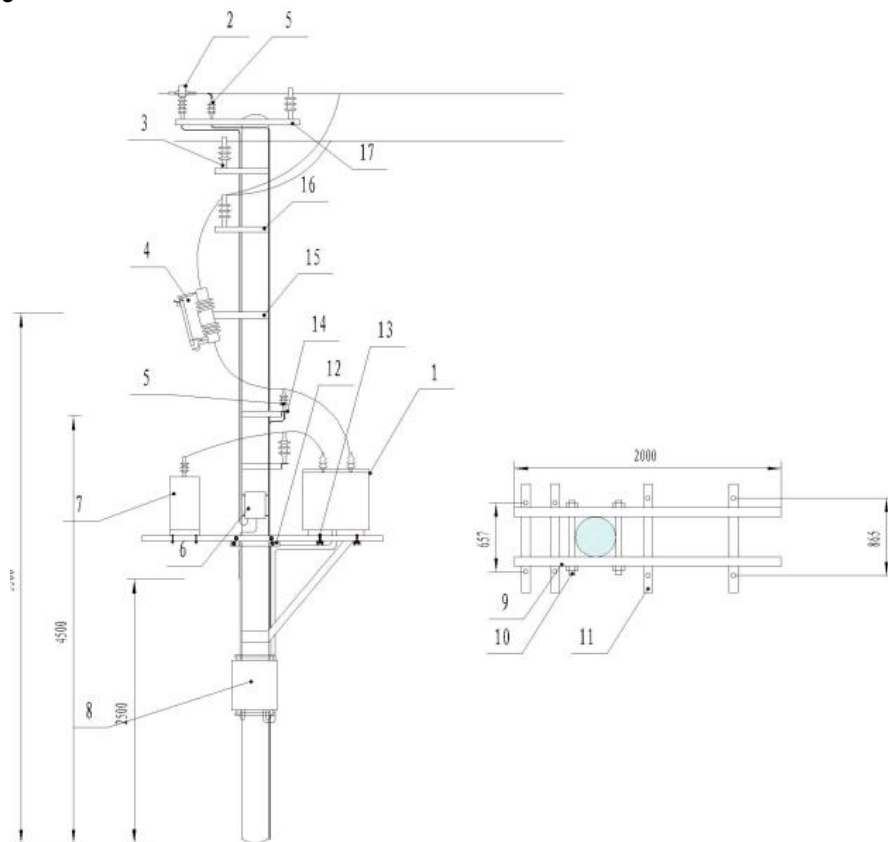
Capacitor fling-cut switches	}	Internal
Power voltage transformers		
Protection current transformers		
Reactors		
Parallel capacitors		

Sampling instrument transformers

Structural characteristics: Easy installation, filth proof

Installation reference of line type

Single pole installation



No.	Type	Items	Quantity	Remarks
1	VQAC-10LC	Automatic reactive power compensation unit	1	
2	LZKW-10	Split core current transformer for line	1	
3		Support insulators	3	
4		Jet fuses	3	Fuse size depends on the capacity of the capacitor
5		Line arresters	4	
6		Current transformer protection case	1	
7	BFMR11-3W	Capacitor		
8		Reactive compensation control box	1	
9		2.5m U steels	2	Suggest to use above 75 U steel
10		Studs	4	Length depends on pole
11		1m steels	4	No less than 50 angle steel
12		Hoops	2	Inner diameter depends on pole
13		Bolt M14×150	8	
14		Arrester mounting bracket	1	

Dual pole installation

No.	Type	Items	Quantity	Remarks
-----	------	-------	----------	---------

1	VQAC-10LB	Automatic reactive power compensation unit	1	
2	LZKW-10	Split core current transformer for line	1	
3		Support insulators	3	
4		Jet fuses	3	Fuse size depends on the capacity of the capacitor
5		Line arresters	4	
6		Current transformer protection case	1	
7		4m U steels	2	Suggest to use above 75 U steel
8		1m steels	2	No less than 50 angle steel
9		Studs	4	Length depends on pole
10		Hoops	4	Inner diameter depends on pole
11		Bolt M14×150	4	
12		Arrester mounting bracket	1	
13		Dropout fuse mounting bracket	1	
14		Support insulator mounting bracket	1	
15		Split core current transformer bracket	1	